

DataWedge Settings for COBI.wms

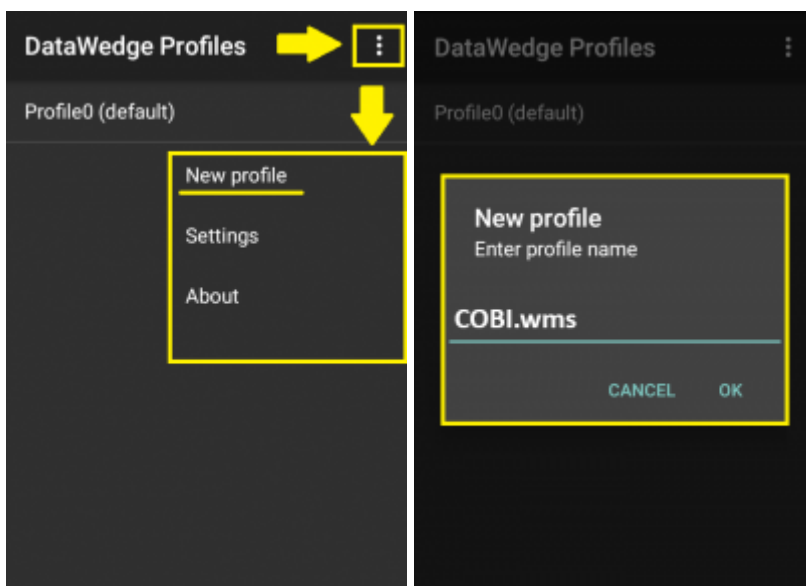
This guide explains how to configure a Zebra Android scanner so it sends scan data to COBI.wms.

Requirements

- Zebra Android device with DataWedge installed
- COBI.wms app installed
- Tested with DataWedge version 8.2

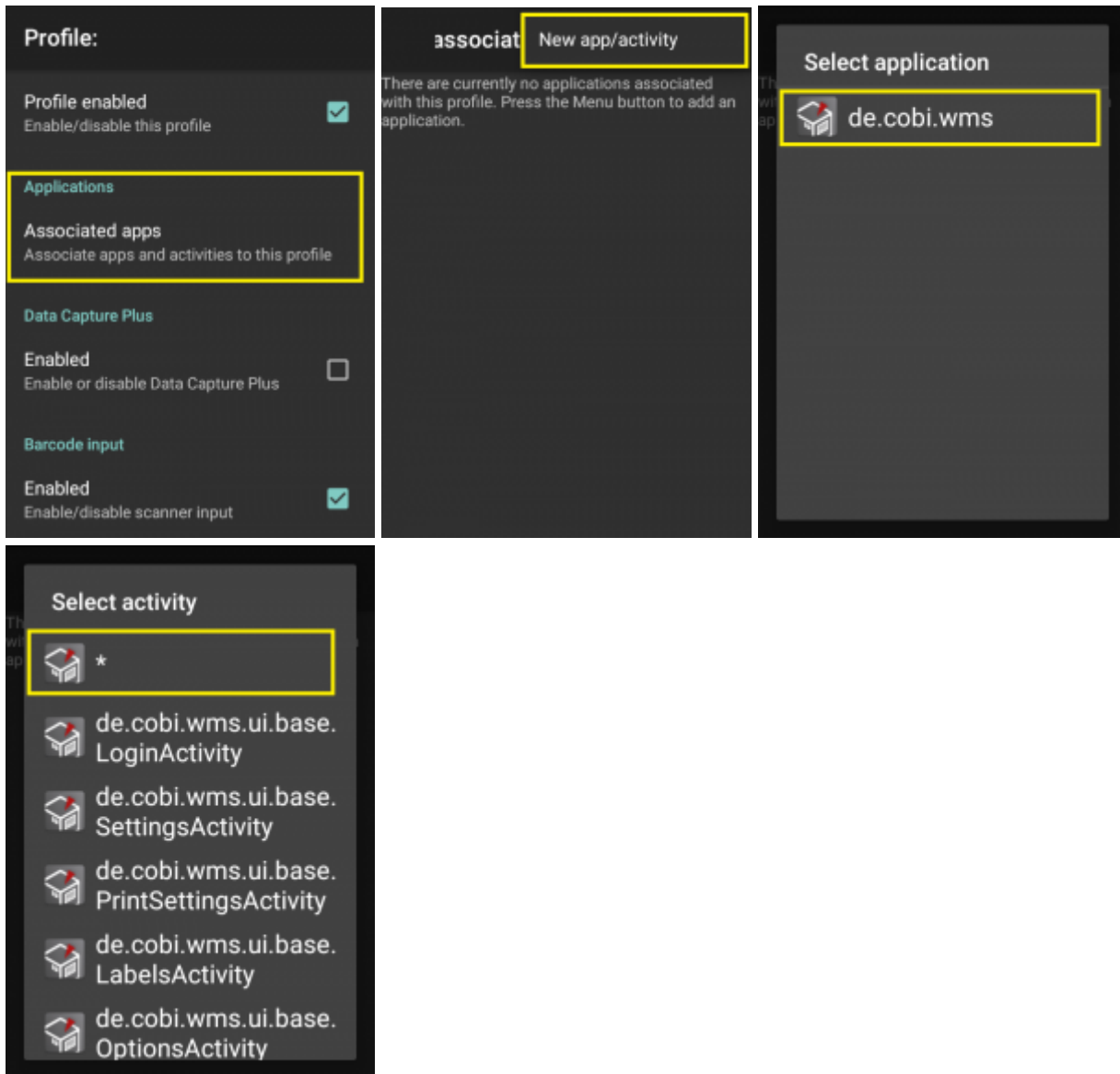
Create a new DataWedge profile

1. Open the DataWedge app.
2. Tap the ⋮ menu (top right) and select New Profile.
3. Enter a name, e.g., COBI.wms.
4. Open the newly created profile to edit it.



Link the profile to COBI.wms

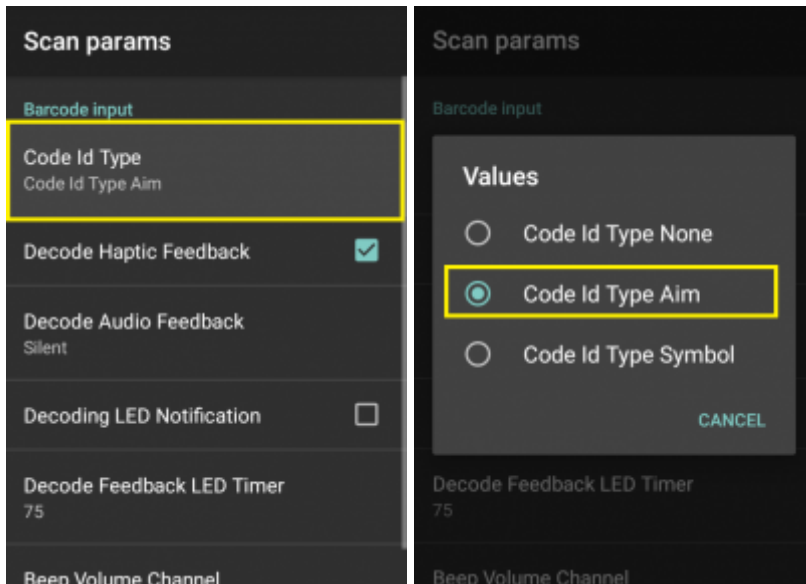
1. Go to Associated apps.
2. Tap ⋮ → New app/activity.
3. In Select application, scroll to de.cobi.wms and select it.
4. In Select activity, choose the * entry.



Configure Barcode Input

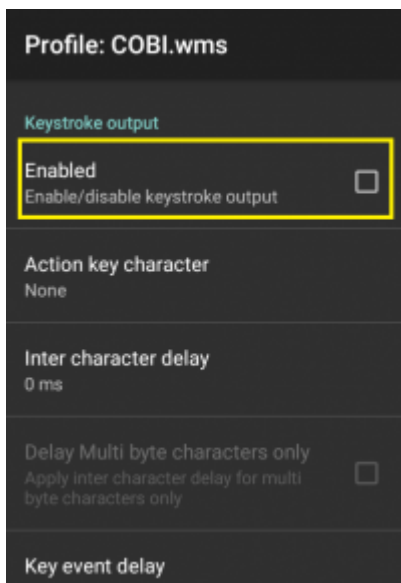
You can enable/disable decoders in Decoders.
The following setting is required:

1. Go to Scan params.
2. Tap Code Id Type.
3. Select Code Id Type Aim.



Disable Keystroke Output

1. Open Keystroke output.
2. Uncheck Enabled.



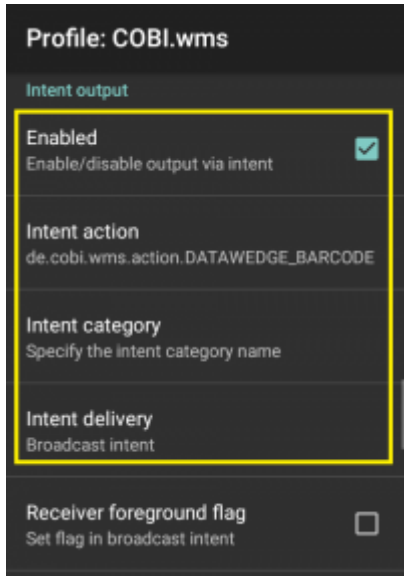
 **Note:** If Keystroke Output is enabled, COBI.wms may receive duplicated scan data.

Enable and Configure Intent Output

1. Open Intent output.
2. Check Enabled.
3. Tap Intent action → enter:

```
de.cobi.wms.action.DATAWEDGE_BARCODE
```

4. Tap Intent delivery → select Broadcast intent.



From:
<https://docs.cobisoft.de/wiki/> - **COBISOFT Documentation**

Permanent link:
https://docs.cobisoft.de/wiki/cobi.wms/datawedge_settings?rev=1754921363

Last update: **2025/08/11 16:09**

